

Pozdravljeni učenci 6. a!

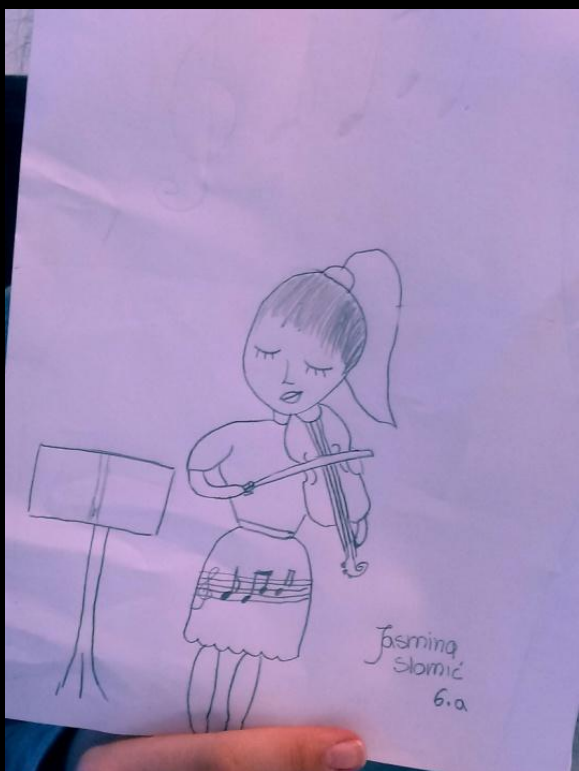
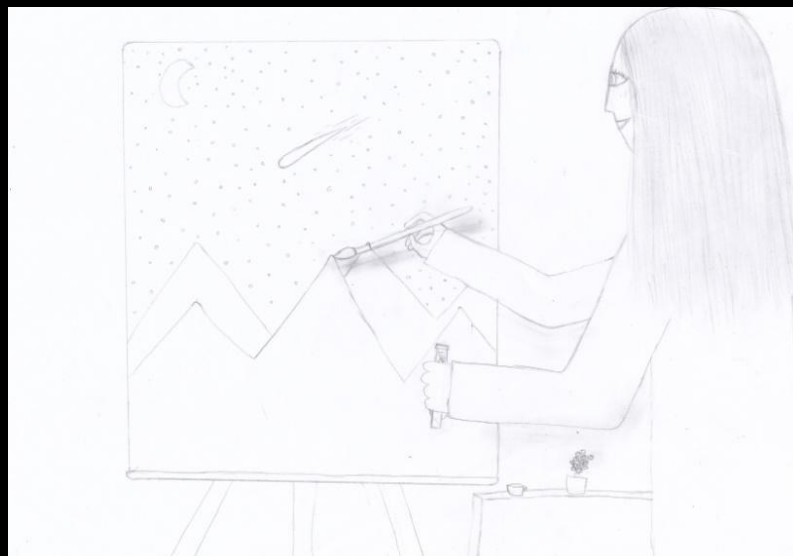
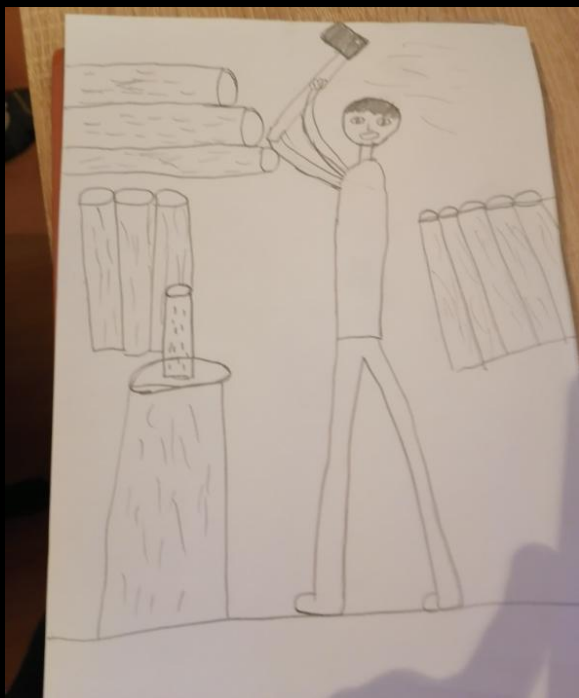
Do 15.6. boste tudi pri LUM vsi pridobili oceno.

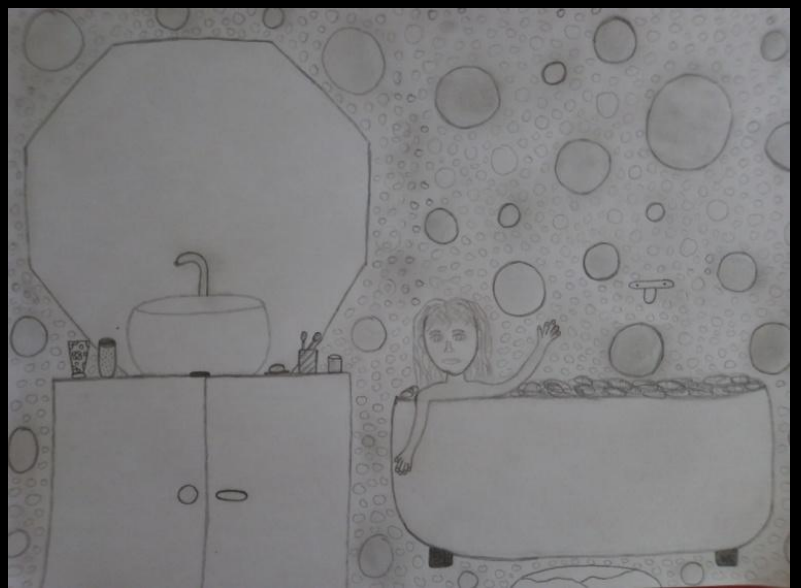
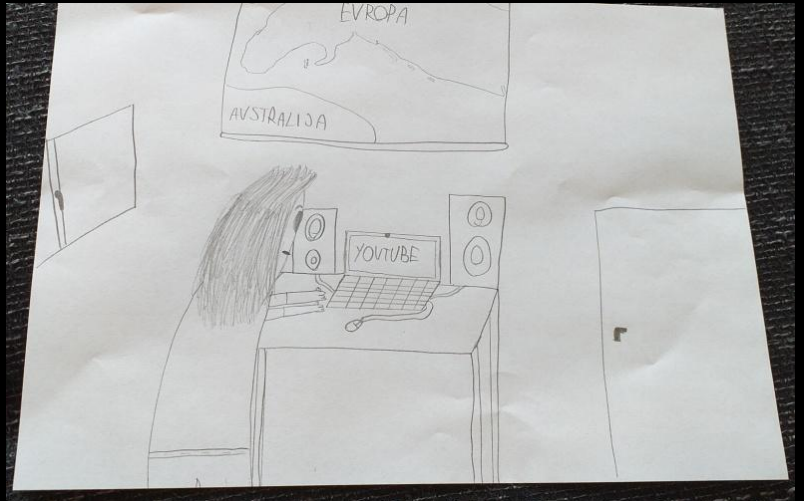
Poskrbite, da boste čim prej oddali vse naloge.

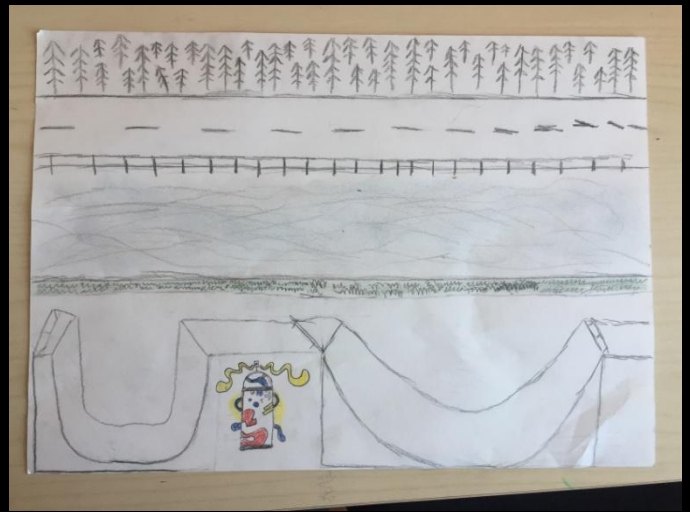
Z vsemi oddanimi nalogami imate priložnost, da ste odlično ocenjeni za najboljši izdelek, ki mi ga pošljete.

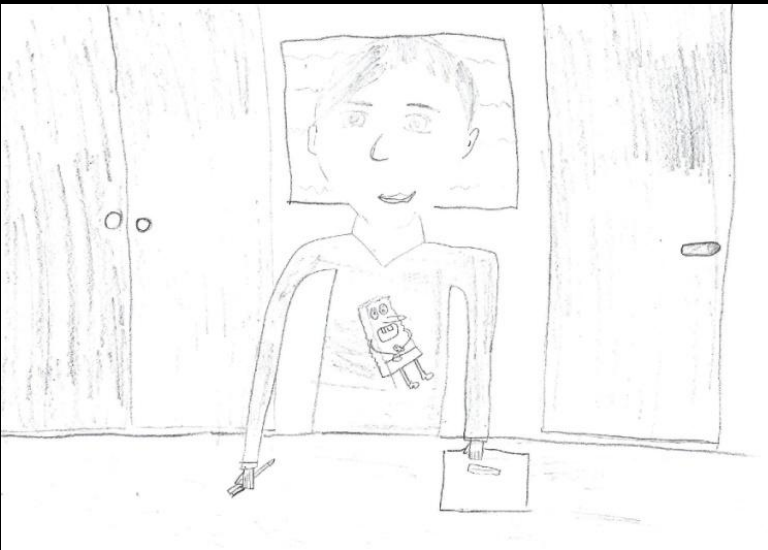
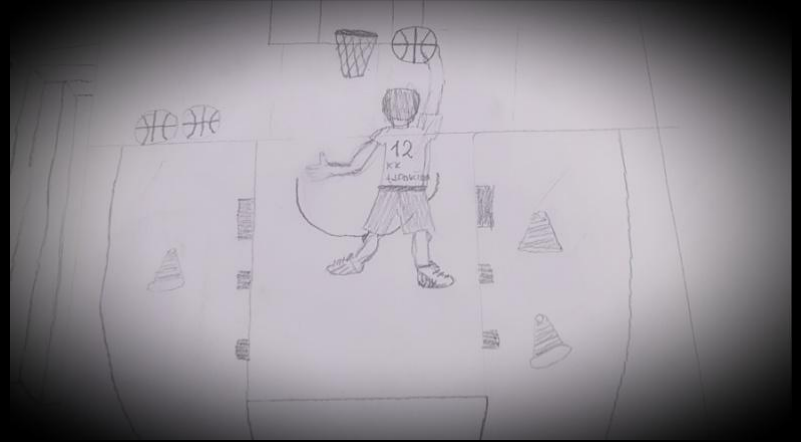
Želim vam vse dobro še naprej in veliko veselja pri ogledu spletne razstave vašega razreda!

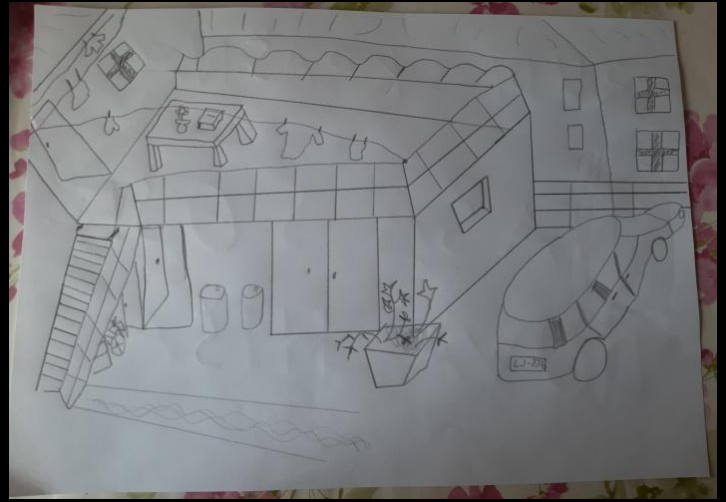
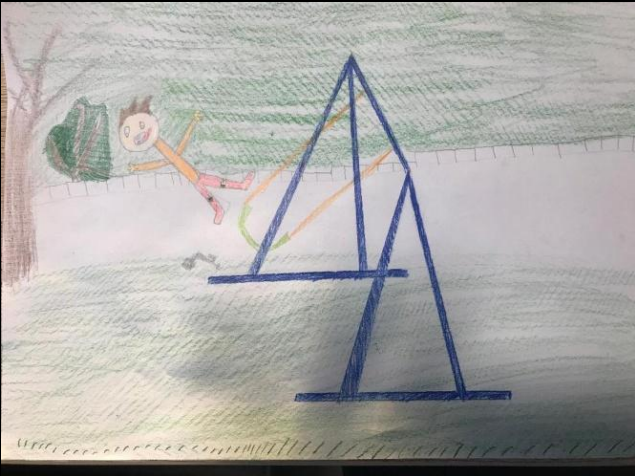
1. NALOGA: ŽANR – likovni motiv



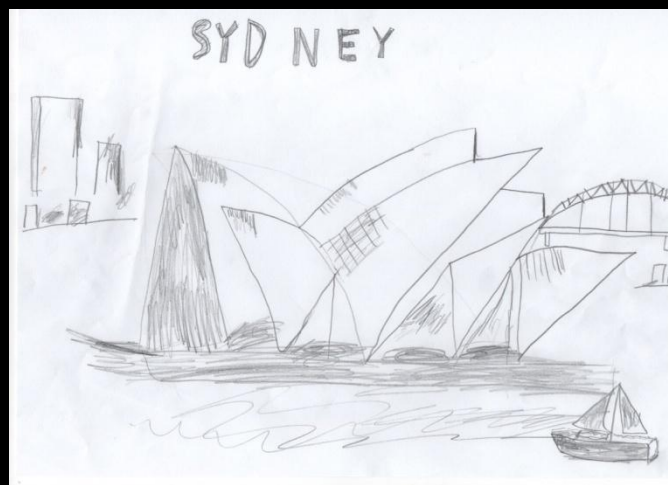


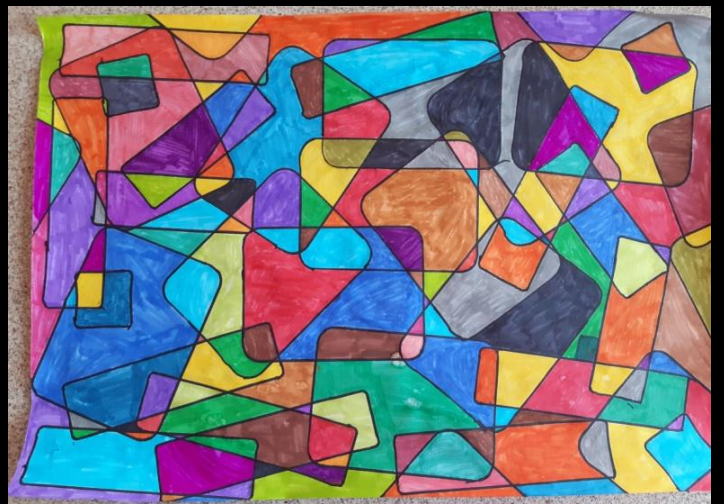
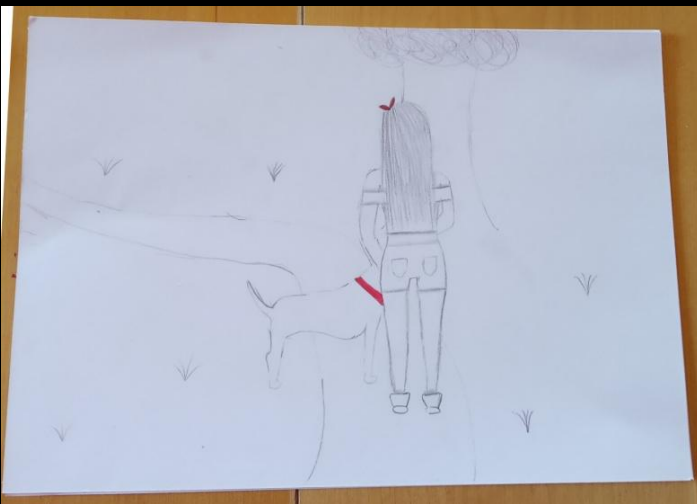
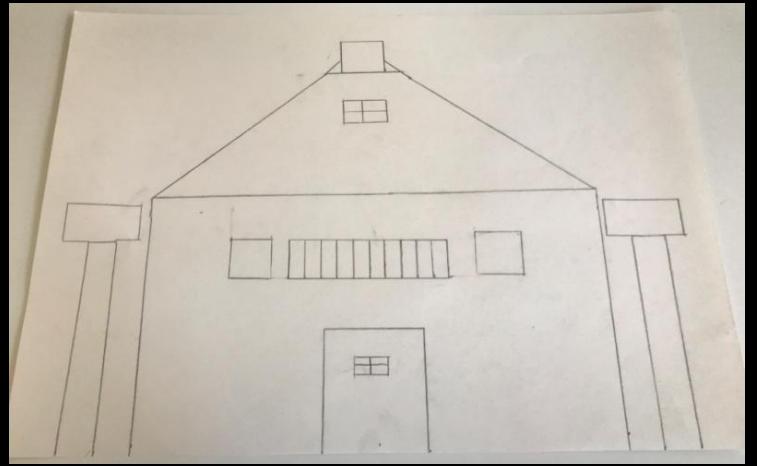
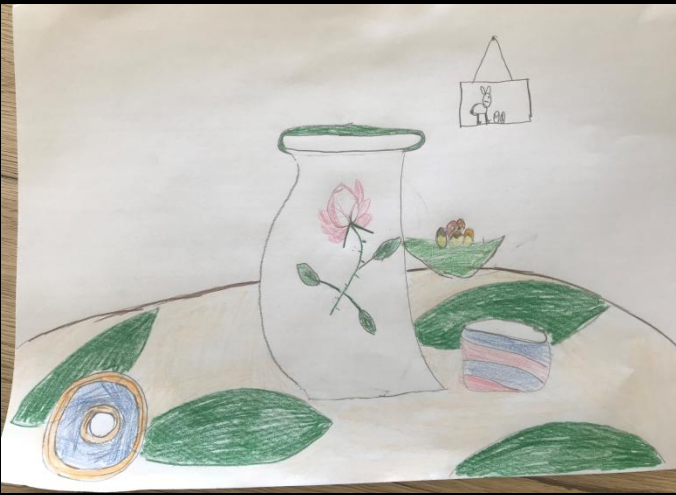


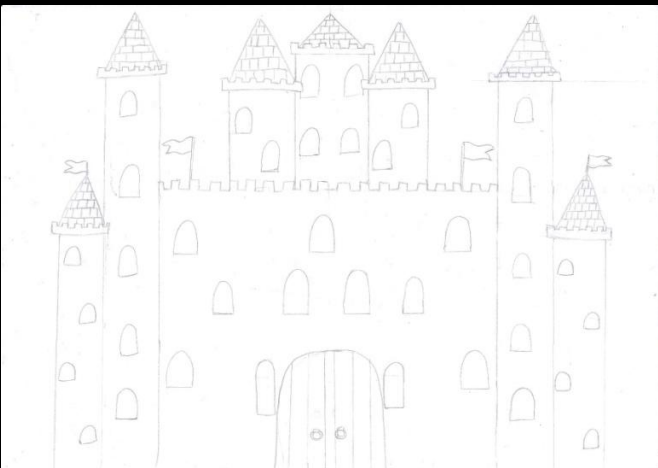


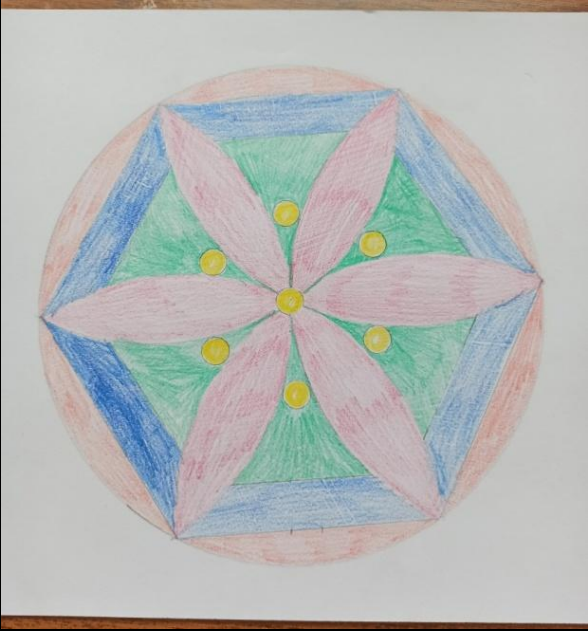


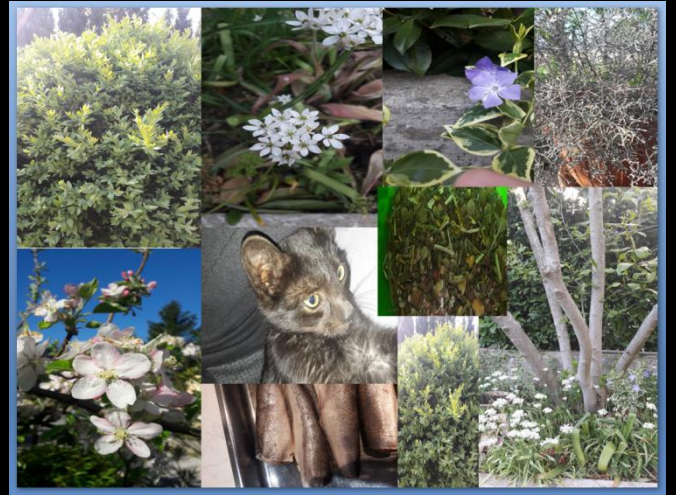
2. NALOGA: SIMETRIČNO IN ASIMETRIČNO RAVNOVESJE





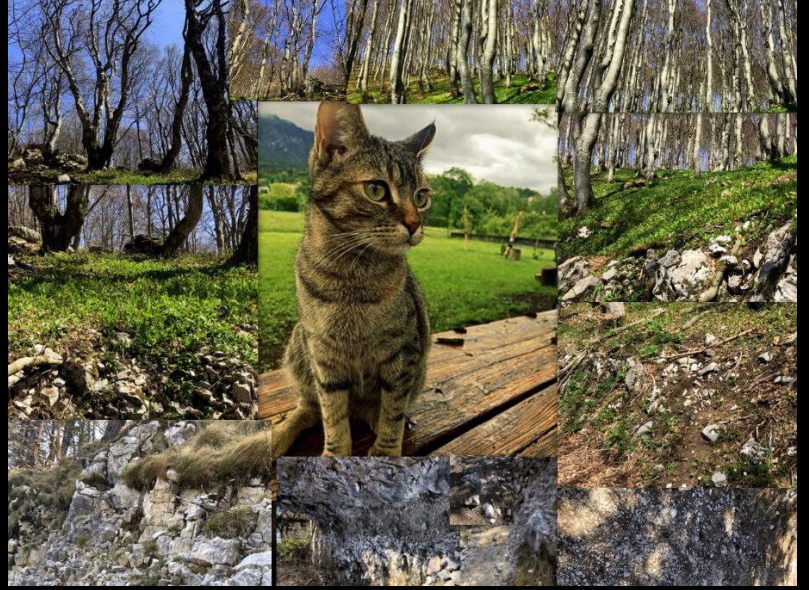
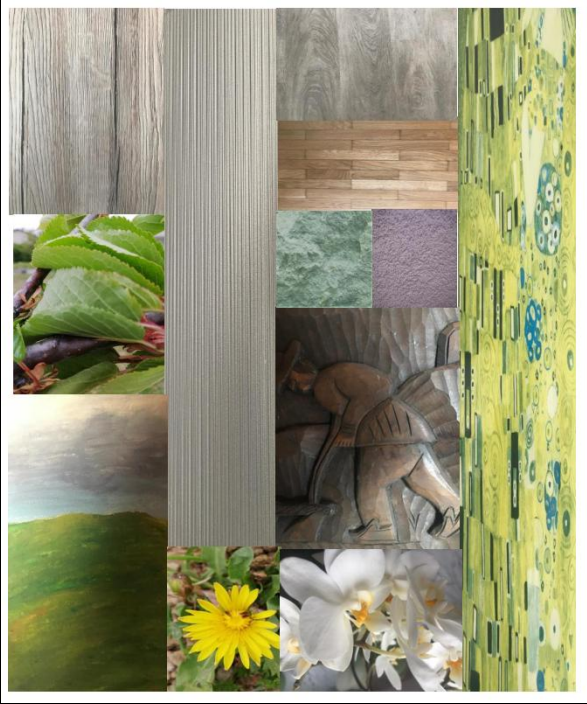


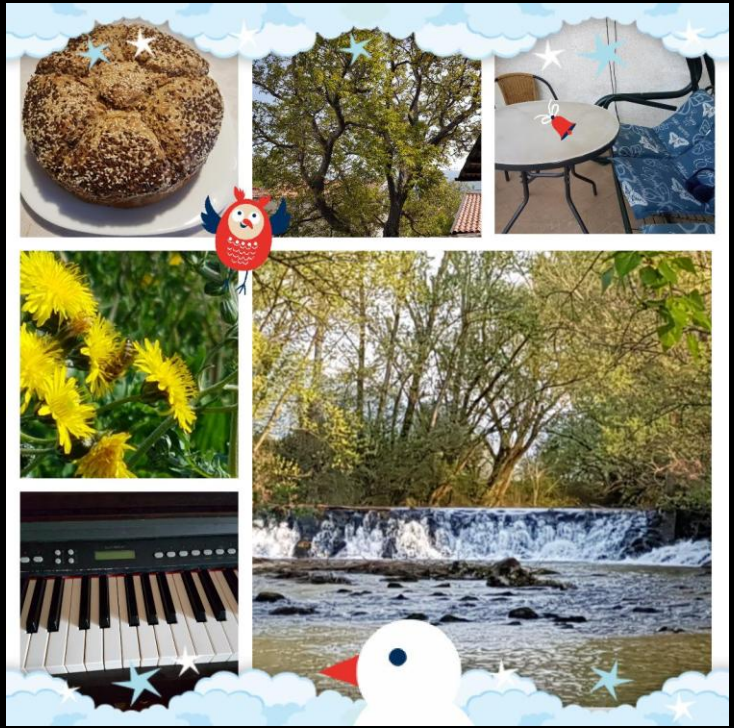
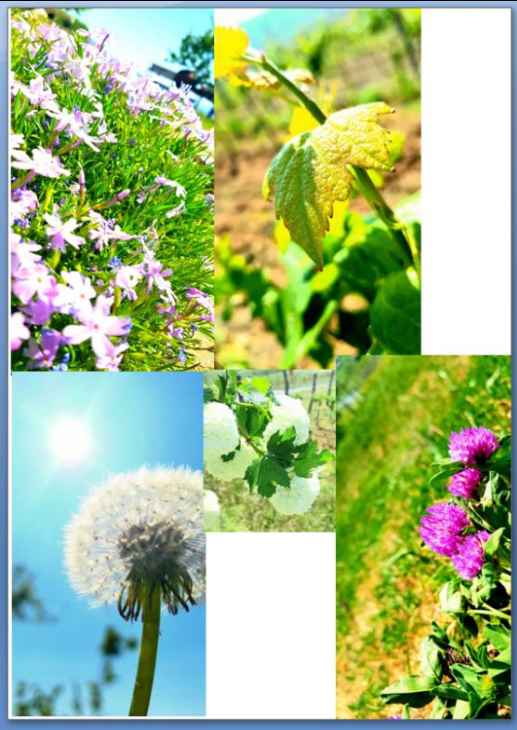




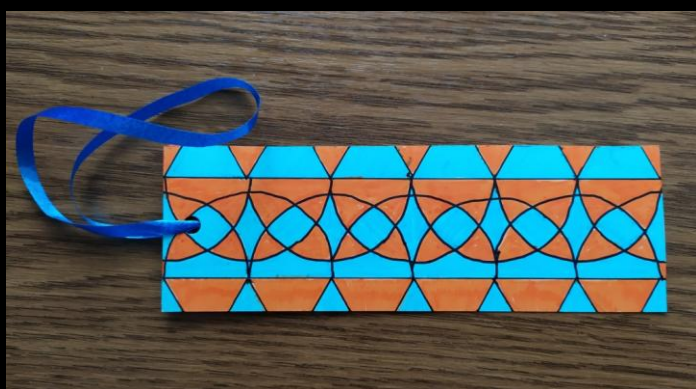
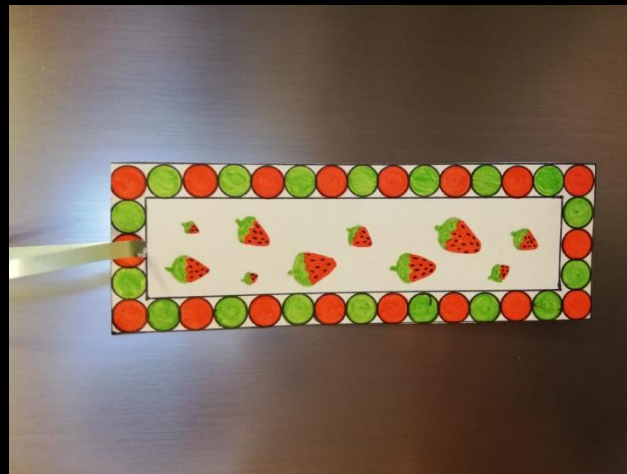


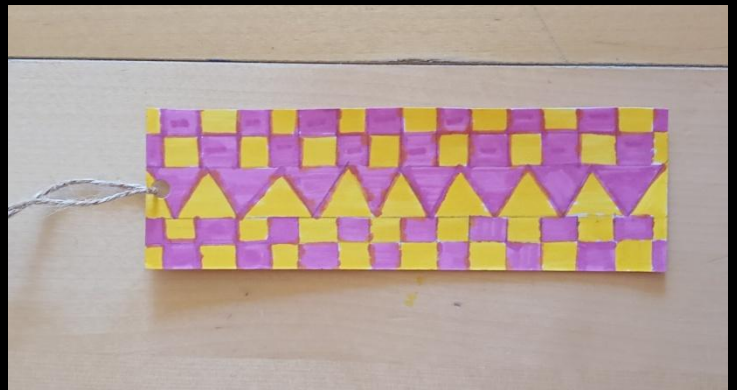
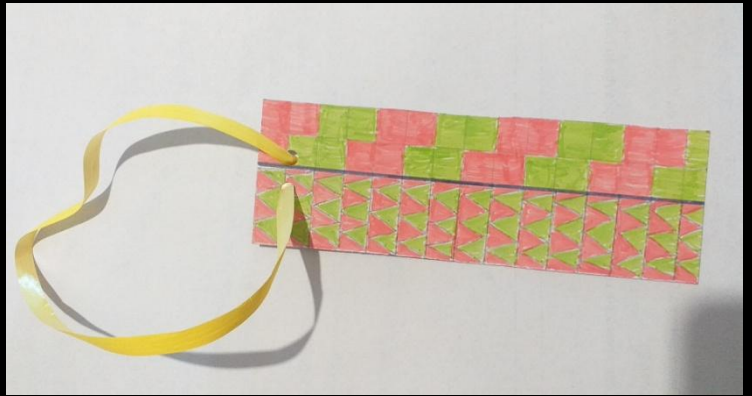
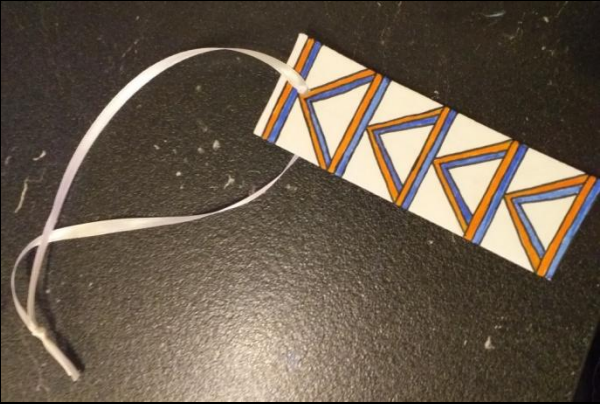


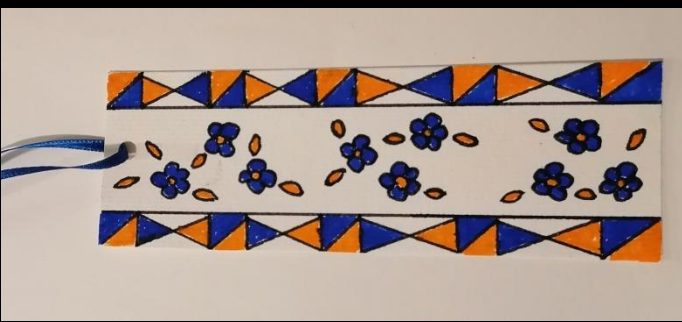
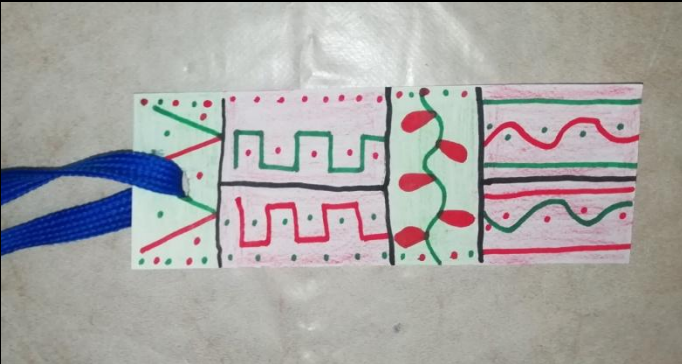
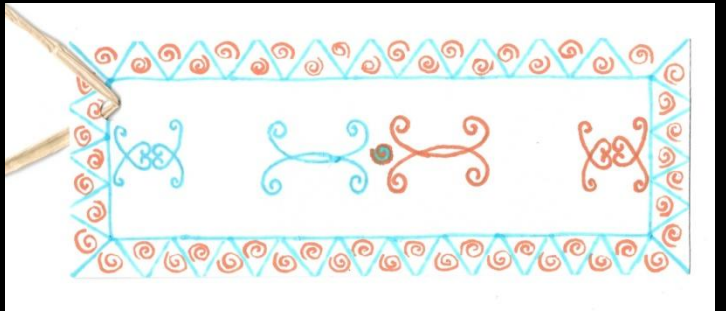
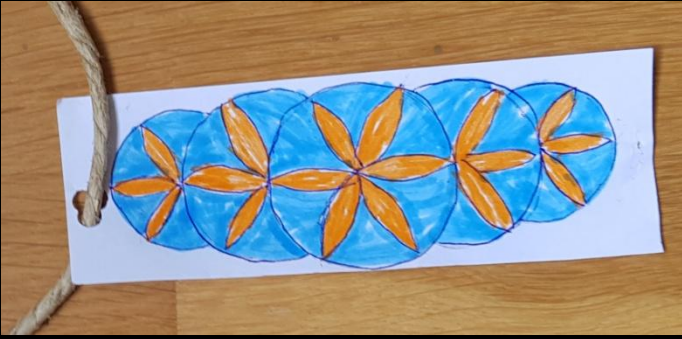




4. NALOGA: KOMPLEMENTARNI KONTRAST







5. NALOGA: POLNA IN VOTLA PLASTIKA







